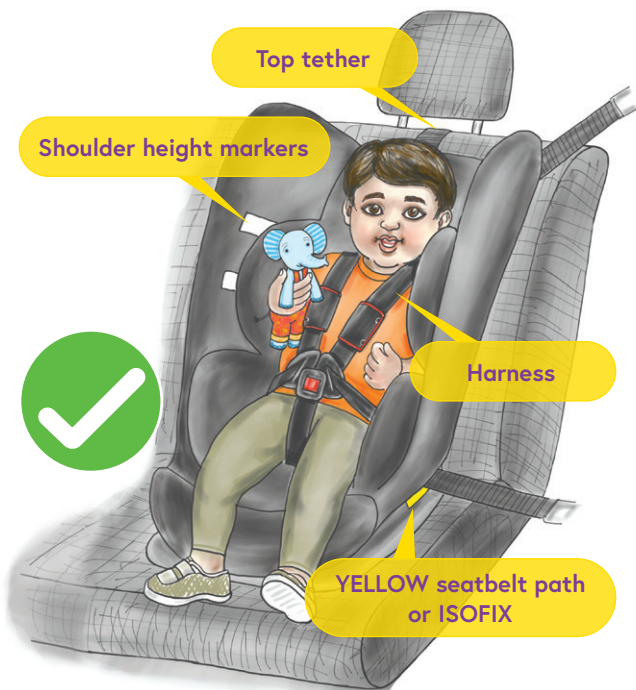


Seat Me Safely

Too big for rearward facing seat*

Child faces the back of the car while they still fit. Child may then move to face the front in a forward facing car seat with harness.



**12 months to 4+ years*

Seat Me Safely

Shoulder height markers

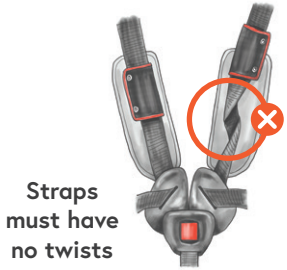
Child faces front of the car until shoulders reach top height marker.

Harness straps

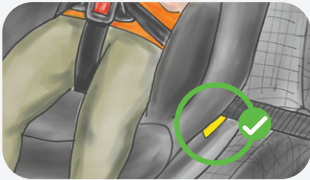
Straps must be on or just above the child's shoulders.



Straps must be firm

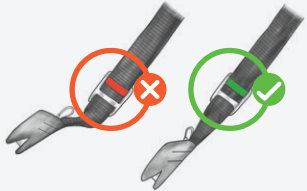


Straps must have no twists



YELLOW seatbelt path

Seatbelt goes through the YELLOW path.



ISOFIX connector

If using ISOFIX, indicator turns green when tightened.



Top Tether

Tether attached to the anchor point should be firm with no twist.