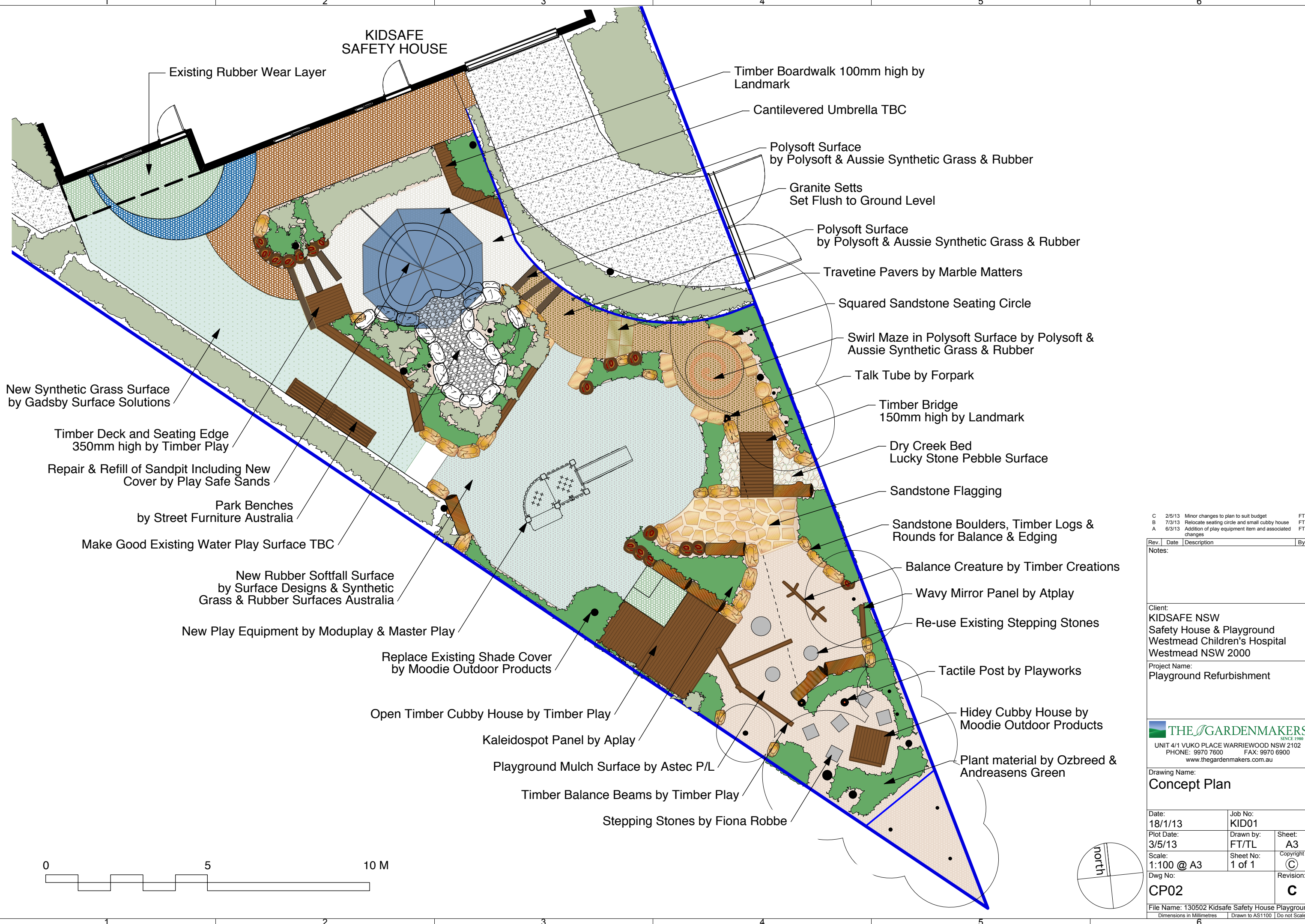


KIDSAFE SAFETY HOUSE



Rev.	Date	Description	By
C	2/5/13	Minor changes to plan to suit budget	FT
B	7/3/13	Relocate seating circle and small cubby house	FT
A	6/3/13	Addition of play equipment item and associated changes	FT

Notes:

Client:
KIDSAFE NSW
 Safety House & Playground
 Westmead Children's Hospital
 Westmead NSW 2000

Project Name:
Playground Refurbishment

THE GARDENMAKERS
SINCE 1989
 UNIT 4/1 VUKO PLACE WARRIEWOOD NSW 2102
 PHONE: 9970 7600 FAX: 9970 6900
 www.thegardenmakers.com.au

Drawing Name:
Concept Plan

Date: 18/1/13	Job No: KID01	Sheet: A3
Plot Date: 3/5/13	Drawn by: FT/TL	Copyright: ©
Scale: 1:100 @ A3	Sheet No: 1 of 1	Revision: C
Dwg No: CP02		

File Name: 130502 Kidsafe Safety House Playground, Westmead
 Dimensions in Millimetres Drawn to AS1100 | Do not Scale